

RICATECH[®]

RC-1200 Series



User Manual

Introduction:

We would like to congratulate you with the purchase of your Ricatech RC-1200 MP4 Player. To ensure you enjoy this player with all its option to its fullest, we advise you to read this manual carefully before using the device.

While reading this manual, kindly connect the player to the provided adapter or USB port of your computer as it needs to be charged at least for 8 hours the first time.

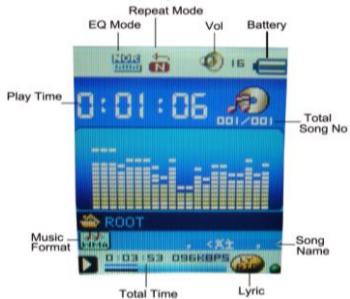
We wish you the best with using your MP4 player. Please be so kind to contact us if you have any questions or problems. The contact data can be found on the back of this booklet.

With kind regards,

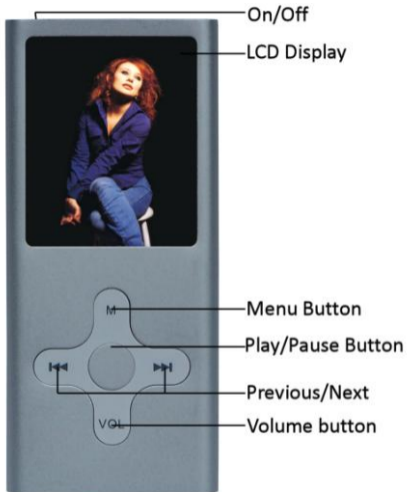
Ricatech BV


1、 Display and buttons

1.1 Displayer



1.2 Battery Level



'' indicates that the power of Battery is full.

When power run out , Indicator will become blank, at this time you should charge for your player



Please turn on the player before charge.



Please turn off the player when not using it.

Charge:

There are 2 ways to charge the player

- (1) Charge by connecting to PC
- (2) Charge by the charger (if supplied)

Note: Only charge by the charger supplied, the wrong charger may damage the player

1.3 Definition to the processing key

Keys processing includes 3 actions: Press, Press and Hold, push

Press: Press a key shortly

Press and Hold: Press a key and hold it at least 1.2s

Push: Push a key once

2、 Basic Functions

2.1 Enter into master menus

Turn on power and then you will enter into master menu.

2.2 Volume Adjust

Press '**VOL**' button shortly , then press '**VOL+**' or '**VOL-**' to increase or decrease volume.

2.3 Turn on

2.3.1 Push '**power on/off**' button right, then press '**play**' key for 4 seconds, you will enter into the master menu

2.4 Turn off

2.4.1 Press '**play**' button for 4 seconds to turn off the player.

2.4.2 when the power is too low , the player will turn off automatically .

2.4.3 Don't turn off the player directly by pushing power on/off switch. You should press and hold '**play**' key to turn off the player firstly, then push the '**power on/off**' button left to power off.

2.4.4 When not using the player, please make on/ff switch in the off position. It can save the power and lengthen the using time of battery.

3、 Play & Stop

On music mode, Press **Play** to play music.

When music is playing, press **Play** button to pause; or press it long to turn off the player.

Start / Stop recording

On recording mode, press 'Play' button to stop.

4、 Play music

4.1、 Steps:



Put earphone into earphone jack

Turn power on to enter into master menus, press '**MENU**' button to enter into music mode ,and then press '**play**' button you will listen to wonderful music

Select music:  next music;

 Previous music.

Volume adjusts: when the music is playing, press '**VOL**' to enter into volume mode and press

 button to decrease volume,  button to increase volume.

4.2、 Equalizer Mode

In playing state

Press **MENU** button to enter into submenu;

Press **Next** button to choose Equalizer Mode;

Press **MENU** button to enter into 'Equalizer' submenu.

Select an equalizer: :

Detail of each equalizer (EQ):

Natural
Rock
Pop
Classical
Soft
Jazz
DBB

Press **Next** button to select an EQ and press **MENU** to confirm it.

4.3、 Synchronous Lyric Display

The player supports lyric files with *.LRC suffix, and displays synchronously.

How to use lyric files

Please make sure the lyric have the same name with the music

For example:

Music file: My heart will go on.mp3

Lyric file: My heart will go on.lrc

How to know if lyric is available

If lyric matched, a symbol  will be shown near the volume.

When marched lyric available :

Press and hold **MENU** to enter into lyric interface;

Press **MENU** return to music mode.

5、 Voice Recording

Each fold can save up to 99 voice recording files.

5.1, how to enter into it

5.1.1, Enter into main menu:

5.1.2, Press **next** button to choose Record mode

5.1.3, Press **Menu button** to enter into Record mode, screen will display as following:

5.1.4. Press **Play** button to start recording.

5.2, Select Record Type

5.2.1. in the interface of 'Record 'stop

5.2.2. Press **Menu** button shortly to enter into record submenu

5.2.3. Press '**Next**' button to select 'Record type' submenu then presses '**Menu**' button to select it.

Fine record	wav file , fine quality
Long REC	act file, normal quality
Fine VOR	VOR file, (Recording controlled by voice, pause

	when mute)
Long VOR	VOR file, (Recording controlled by voice, pause when mute)

5.2.4. Press **Next** button to choose appropriate type and press **Menu** button to select it

5.2.5. Press **Play** button to start recording.

5.3, Play recorded files

Enter into main menu

Press **Next** button to choose 'voice' menu

Press **Menu** button to enter into it

Press **Play** button again to play the file.

How to choose voice record files

Previous: Select previous file

Next: Select next file





6、 FM radio

6.1. Enter into main menu;


6.2. Press **next** button to choose "FM Radio" menu

6.3. Press **Menu** button to enter into it

6.4. Automatic searching

Press and hold  or  button for two second, then the player will search forward or backward at the speed of 0.1 MHz/sec , when finding a station, it will stop automatically; if you want to stop searching, shortly press'  or 'button

6.5. Manual micro adjusting

Shortly press  button: 0.1MHz backward; shortly press  button: 0.1MHz forward.

6.6. Save current channel:

Press Mode to entry into FM submenu

Press '**Mode**' button again to save the channel.

6.7. Listen to a saved channel:

You can press **Play** button to listen to a saved channel.

6.8. Volume control

Press '**VOL**' enter into volume

 : Increase volume;

 -: Decrease volume

 : 20 channels can be saved each in “General Frequency” and “Japan Frequency”

7、 Photo Browse

This function is available for the pictures of JPEG, GIF, BMP format.

7, 1; on main menu, press **Next/Prevision** to choose '**Photo Browse**' menu

7, 2: Press **Menu** to enter into corresponding submenu.

7, 3; Press **Next** or **Prevision** button to choose the picture you want to review, then press **Play button** to play it

8、 E-BOOK: can read text file

8.1. On main menu, press **Next/Prevision** to choose '**E-BOOK**' menu

8.2. Press **Menu button** to enter into corresponding submenu:

8.3 . Press '**Next**' or '**Prevision**' to choose the document you want to read, then press **Play** to read it

9、 System

9.1 You can set system performances here, options may vary in different firmware version

Enter into main menu

Press **Next** button to choose "**system**"



Press **Menu** button to enter into it.

9.2 Options introduction:

● clock	Set date and time when saving recorded file
● LCD set	Set screen brightness
● Language	Choose different languages
● ScreenSaver Sel	Choose different screensaver
● power off	Set a count down time in minutes, the player will shut off when time out.
● Replay mode	Set repeat status
● Online mode	There are three option(Multi,normal,encrypted)
● Memory info	Check memory space and usage status
● Firmware Version	Version of player's firmware
● Exit	Exit from Setting interface

9.2.1. Press **Menu** to enter into 'clock' interface

Clock:

Press  or  button to change the time and press '**VOL**' to set it, after setting, press **Menu button** to exit.

9.2.2 LCD Set

Press **Menu** button to enter into screensaver setting;

Press **Next button** to choose (**Last** for previous)

After setting, press **Menu button** to exit.

9.2.3 Language Setting

Press **Menu** button to enter into language setting;

Press **Next** for choosing (**Last** for previous)

After setting, press **Menu** to exit.

9.2.4, power off Setting

Please note:

You can set time in seconds on 'off time' mode, allow the player shut down automatically This function is unavailable if the time is 0.

You can set time on 'Sleep mode', allow the player is shut down automatically. It is designed for listening to music before sleeping.

Note: Sleep mode valid only once after setting, you have to set again if you want to use it next time.

9.2.5, 'Replay mode'

Please enter into 'replay mode' menu

Note: in "Manual replay" you should do it manually.

In "Auto replay" the player can identify sentence automatically when on A-B repeat. (This function is designed for repeat sentences in language studies.)

9.2.6, 'Memory info'

You can check total memory space and the percentage of usage.

9.2, 7, 'Firmware version'

You can find the player's firmware's version.



Tips: Press Play can exit current menu quickly. The function is valid on all other menus.

10、 Movie

On main menu, press **Next/Prevision** to choose '**Movie**' menu. And then press '**plays**' button you can watch the movie.

If you want to change the volume, you should stop the movie, then press '**VOL**' button, then press **▶▶** : Increase volume; **◀◀** -: Decrease volume

11、 How to install the CD driver.

11.1. Please insert the CD to the CD-ROM, open the CD, double-click "setup.exe", and then proceed according to the instructions.

11.2. After the driver is set up successfully, by clicking the "start"→Program→MP3 Player Utilities 3.57, you can see five tools: AMV Convert Tool, AMV Player, MP3 Player Disk Tool, MP3 Player Update Tool & Sound Convert Tool. Among of them, MP3 Player Disk Tool is for setting encrypted drive, MP3 Player Update Tool is for updating the firmware/bios, and Sound Convert Tool is for converting the format of Audio file.

11.3. Using as USB flash drive

- ◇ As USB flash drive, it is USB2.0 interface. Compatible with Win98, Win98se, Win2000, Win Me & Win XP, and Mac OS 10.3 & above, and Linux Redhat 8.0 & above. For

- Win98/Win98se, setting up the driver is required.
- ✧ When this device is connected with computer, by short pressing [**MODE**] to switch it to MP3 player mode.
- ✧ This device can recognize a maximum of 99 first grade folders set up by the user in the USB flash drive.

12. MP3 Player Disk Tool

After install the utility from the CD, you can run MP3 Player Disk Tool to format the player and for the encryption function

12.1 Format: You can format the player either by this program or by Windows.

12.2. Partition and Encrypt

You can divide USB disk into two parts by this tool, one is encrypted and the other is non-encrypted

Note: Windows 2K should be installed SP4 to support this function

Steps:

12.2.1. Connect the player with PC

12.2.2. Run MP3 Player Disk Tool

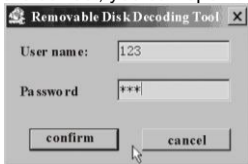
12.2.3. Select "partition and encryption"

12.2.4. Select a suitable space for encrypted disk and setup user name and password

12.2.5. Click "start" and finish the partition

12.2.6. You will see two disks. Click encrypted disk "RdiskDecrypt" and input user name and

password in the dialogue; if they are correct, you can open the disk and copy files in it.



12.2.7. Every time you connect the disk with your PC, you need input user name and password to open the encrypted disk.



Warning: Divide one disk into parts will remove all data, and so does combine process.



Warning: Please remember username and password. If you forget it, you can only making combine processing and you will loss all encrypted data.

13、AMV convert tool.

The program can support *.ASF,*.WMV,*.MPG,*.RM,*.MOV,*.VOB formats, but you must convert them into AMV format by using AMV convert Tool.

Following is its instruction:

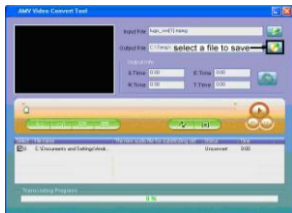
13.1, open AMV convert Tool.

13.2, Select the files you need to convert.



13.3, Select a folder to save converted files.

14.4, Click '↻' to start converting.



15、 Technical Specifications

Dimension	90*40*9mm	
Weight	43g	
Screen	262K , 1.8'TFT	
Memory	128M – 4GB Flash(optional)	
Power Supply	Max 8 hours play	
Voice Recorder	Sample rate	8KHz
	Format	WAV (32K bps), ACT (8K bps)
	Time	35hours (ACT, 128M Flash)
MP3、 WMA、 WMV、 AMV	Max. Output	(L) 10mW + (R)10mW (32Ohm)
	MP3 Bit rate	8K bps – 320K bps
	WMA 、 WMV 、 AMV Bit rate	5K bps – 192K bps

	Freq. Response	20Hz to 20KHz
	SNR	85dB
FM Radio	Freq. Range	76MHz – 90MHz / 87MHz – 108MHz
	Max. Stored Channels	20 + 20
	Max. Output	(L) 10mW + (R)10mW (32Ohm)
	SNR	45dB
Supported Music Formats	MP3, WMA,ACT	
Operate Temperature	-5 to 40 degree	
18 Languages Display	Simple Chinese, English, Trad Chinese, French, German, Italian etc.	
Supported Systems	Windows98/SE/ME/2K/XP、 Mac OS 10、 Linux 2.4.2	

Frequently asked questions (FAQ) :

No Sound	Check the volume settings or try another headset.
Not recognized on PC	When using Windows 98, you need to install the drivers from the supplied CD-ROM.
Bad FM reception	The headset cable is used as an antenna, please check the cable condition.
Files are being skipped	Copyright protected files (Microsoft DRM) downloaded from paid services are not supported by this player. These files will be skipped.
Files are played for only 10 seconds.	Player is set to "Intro mode" please set the play mode to "Normal" (Chapter 12.1.1)
Videofiles are not played.	Only uncompressed files will be played. Files compressed with DIVX or XVID compression will be converted but will not be played by the player.
Sound quality is bad.	Check if the quality of your music is sufficient. The quality can vary from 64Kbps (average) to 320kbps (Good)

Warranty:

Ricatech BV covers all products (Excl. Aecessories) with a 2 year warranty applying to all faults caused by a factory-error. External physical damage will not be covered by our warranty

Warranty:	All hardware errors occurring within 2 years after purchase unless caused by points mentioned below.
No Warranty :	Faults caused by: *Dismountal by any other service center then ours. *Firmware upgrade *Water and moisture damage *Drop and bump damage *Usage with non approved Ricatech accessories. *Short-circuit or over-voltage by host computer (PC) *Physical damage, loss or damage to accessories
Out of warrantry repairs	Please be so kind to contact us for out-of-warranty repairs. We will provide you with a quotation with the expected costs. Goods out of warranty cannot be returned to your reseller.



Ricatech BV
Tinstraat 103
2984AN Ridderkerk
The Netherlands

Tel : 0031 (0) 180 446020
Fax : 0031 (0) 180446029
Email : info@ricatech.com

Technical Support

For technical support and price quotations please contact our helpdesk directly at :

Telephone : 0031 (0) 180 446023
Email : Support@ricatech.com

