

## Digital MP3/4 Player



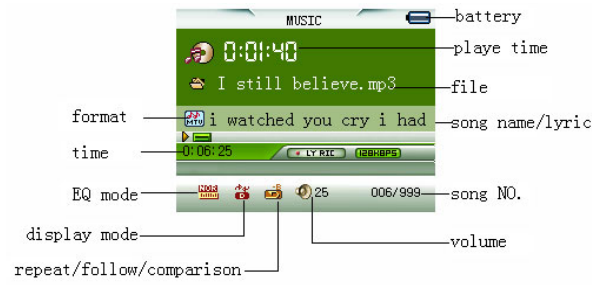
**User manual**

## 1. Locating the Controls

### 1.1 Appearance & Keys



### 1.2. Display screen



### 1.3. Battery capacity

■ indicates that the power of Battery is full. When power runs out, Indicator will become blank, at this time you should charge for your player.



You must turn on the power switch to recharge when the voltage capacity is poor, otherwise the battery will not be charged.



When you don't use the player, please turn off the switch

#### **1.4 Definition to the processing key**

Keys processing includes: Press, Press and Hold,

**Press:** Press a key shortly

**Press and Hold:** Press a key and hold it for 3 seconds.

## **2. Basic Functions**

### **2.1 Volume Control**

Press "VOL-" button to decrease Volume.

Press "VOL+" button to increase Volume.

### **2.2 Turn On/Off**

First push "**Turn on/off**" button to "on", then long press "**Play**" button to turn on the player.

When you turn off the player, please long press "**play**" button first, then push "**Turn on/off**"

button to "off".

### **2.3 Play& Stop (Pause when recording)**

Fast press "Play"

You may press **Play** button to fast exit from any menu or option interfaces.

### **3. Key function defines**

1. Start/Play/Pause/Stop, press "Play" button.
2. "Mode" selects and enters in the main menu or submenu.
3. ON/OFF" turn on the power
4. Next: to the next or speed play
5. Pre: go to the previous or skip backward.
6. "VOL+": increase the volume.
7. "VOL-": decrease the volume.
8. "USB": USB jack
9. "EARPHONE JACK": standard earphone jack
10. "Power": switch on or off the MP4 player.
11. "REC": recording mode.

#### **4. Play Music**

##### **4.1 Basic Operation**

1. Connect the earphones.

2. Push the Power switch to ON.

Long press **PLAY** button to turn on the player and enter Music mode. Press button again to play music.

3. To select music

Pre: select previous music

Next: select next music

4. To adjust the volume

Press "VOL-" button to decrease Volume.

Press "VOL+" button to increase Volume.

##### **4.2 EQUALIZER Mode**

###### **Playing music status**

1. Press **Mode** button to enter Play Submenu

2. Push **Next** switch to select Equalizer menu

3. Press **Mode** button to enter EQUALIZER selection Menu.

4. Equalizer mode select,there are:Natural, Rock,,Pop, Classic, Soft,Jazz,DBB.  
Push **Pre/Next** button to select, and press **Mode** button to confirm selection.

#### **4.3 Lyric Display**

This player supports “.LRC” lyric files and lyrics may be displayed isochronously while playing music.

How to use lyric files?

First , saving the lyric file with the same name as that of the corresponding music file.

e.g.: Music file name: Andy-Water.mp3

Lyric file name: Andy-Water.mp3.lrc

When marched lyric available:Press and hold **Mode** to enter into lyric interface;Press **Mode** return to music mode.

#### **5. Play movie**

Note: this player supports AMV video format

PLAY: Stop play.Long press to shut down.

MODE: Long press into main menu

PRE/NEXT: Previous /next.

## 6. Record Voice

Make sure that the battery is not in the status of "Low battery".  
The player may save 99 recording files under each directory.

### 6.1 Start recording in Record Mode

1. Push **Next** switch to select recording mode.
2. Press **Mode** button to enter Record mode.
3. Press **Play** button to start recording.

#### **NOTE:**

↓ The recorded file is saved in the current folder set in "Recording Stop submenu/ /Local Folder".

↓ If "Overflow" is displayed on the screen, the player's memory is full. Please delete other files to make some space available.

↑ If "over record" is displayed on the screen, the current directory has already had 99 recording files. Please switch to another directory.

↓ Recording mode only responds to "Play" key.

## 6.2 Select Recording Type

1. On the status of Stop Recording
2. Press **Mode** to enter Record Submenu.
3. Press **Next** to select REC Type option. Press **Mode** to enter this option
4. Press **Next** to select desired recording type. Press **Mode** to confirm the type selected

6.3. Press **Play** to start recording

6.4. Long press mode to saving

## 7. Play Recorded Files

1. Enter main menu.
2. Press **Next** to select "Voice mode".
3. Press **Mode** to enter Voice mode interface.
4. Press **Play** to start playing.
5. Select recorded files:

Pre: to select the previous recorded file; Next: to select the next recorded file


6. To adjust the volume

Press "VOL-" button to decrease Volume; Press "VOL+" button to increase Volume.

### 8. FM Radio

Enter to play mode while need to recover to save station at present, and play, current the station is the minimum frequency.

FM submenu options Introduction

: The frequency location are in the frequency marker table along with the change of the current frequency.



: The current frequency marker table



: The current frequency

#### How to use FM

1. Enter main menu.
2. Press **Next** switch to select FM Mode.
3. Press **Mode** button to enter FM mode
4. Record station

When you listen to the program you can record your favorite program

Press **Mode** button to enter FM mode submenu. Select " Record ", convert automatically to recording menu, press **PLAY** to start/stop recording. and press **Mode** to save

5. Freq Mode function:

Push **Pre/Next** button and the player forward or backward single step 100KHZ to manual search station; Push on **Pre / Next** button for about 2 seconds, and the player scans forward or backward per 100 KHz, and stops at the scanned station. If you want to stop scanning, push **Pre / Next** switch to stop.

6. Save to scanned station

Press MODE to enter FM mode submenu

Press Mode again to save the station

7. Search station function:

If the player exist more than one station, Press **PLAY** button to listen to the station in sequence

8. Auto Search function:

Press **Mode** to enter Search mode. Push **NEXT** to select Auto search function, the player can auto-scanned at speed of 100 KHz

9. To adjust the volume

Press "**VOL-/ VOL+**" button to decrease or increase Volume

⚠ Normal Band and Japan Band can save maximum 20 stations respectively.

#### **9. Picture ( support JPEG BMP,GIF format)**

Enter the file selection

Press the "play" button and browse

Press the "Pre/Next" button to selects the previous/next file.

Play set: manual play and auto play

When you select Auto play, you can set the page turning time from 1 sec. to 10sec.

Long press the "mode" button to return the main menu

#### **10. Setting**

System parameters can be set here and every option varies according to firmware upgrading.

First Enter main menu

Push **Next** button to select System setting icon, and then press **Mode** button to enter Setting submenu interface is as follows:

System Time	Set the time and date when recorded files are saved
LCD set	Set the LCD light
Language	Set different languages displayed
Power off	Set a fixed time after which the player may turn power off automatically
Replay mode	Set working status on Replay Mode
Online Mode	An option specially designed for "Private Space" function
Memory info	Show memory capacity and percentage that has been used
F/W version	Show firmware version
F/W upgrade	Special for firmware upgrading
Exit	Exit from current interface

#### 10.1 System Time

1. Press **Mode** to enter record times interface
2. Press VOL+ to set year, year twinkling
3. Press Next to adjust the maximum (PRE is contrary)
4. Press **Mode** to exit

### 10.2 LCD Set

1. Black mode (0-30): Set up in how long have not button operate, screen darken.
2. Exit

### 10.3 Language

Operating steps refer to Equalizer Setting

1. At System setting interface, press **Next/Pre** button to select "Language" icon:
2. Press **Mode** button to enter "Language" setting interface:
3. Push Next/Pre button to select desired language.

There are many choices: English; Japanese; Korean; French; Italian; German; Spanish and so on.

4. Press **Mode** to confirm to exit.

### 10.4 Power Off

Off Time mode refers that after a fixed period of time when no operation on keys at Stop mode, the player may turns off automatically to save power. If "0" is selected, power saving function is invalid.

Sleep Time refers that you may set a fixed period of time) for the player to turn off automatically

when no keys operation no matter which mode it is at. This function is specially designed for listening to music before sleep.

**Note:** Setting of Sleep Time is valid only once and the set time will be cleared after power off. The time needs to be set again next time.

#### **10.5 Replay Mode**

Operating steps refer to Equalizer Setting

Manual Replay means that at A-B Replay Mode the endpoint B can be set manually only.

Auto Replay means that at A-B Replay Mode the endpoint B can be set automatically. (Especially for English Reading files without music)

#### **10.6 Online Mode**

Operating steps refers to Equalizer setting.

Some operating systems (under Windows 2K SP4) can not support two driver letters in one USB disk. Thus, if "Private Space" function is on, choose which disk you are going to use, i.e., "single ordinary disk" or "single encrypted disk", in order to correct display of selected disk after connecting to PC.

#### **10.7 Memory Info.**

The number displayed represents total memory capacity and the percentage refers the capacity used.

### 10.8 F/W Version

Operating steps refers to Language setting..

### 10.9 F/W Upgrade

It is specially designed for Firmware Upgrade.



Tips: After pressing **Mode** button to select options, you may press **Play** button to exit from menu directly. The operation on **Play** button for direct exit is valid to all menus.

### 11. E-Book (Text )

11.1 On main menu, press **pre/next** to choose 'E-BOOK' mode

11.2 Press '**Mode**' button to enter into corresponding submenu

11.3 Press '**Next/Pre**' to choose the document you want to read, and then press '▶||' to read it

11.4 Delete the files:

Choose the file that you want to delete, press '**Mode**', and press '**Next/Pre**' to choose "Delete file", then press '**Mode**', and select '**yes**', then press '**Mode**' to confirm it.

### 12. Game (for Optional)

1. Enter into menu, press **Next** to select game mode,
2. Press Mode to submenu. Press '**Next/Pre**' to choose the game you want to play
- 3 Press Mode to start
- 4 Long press Mode to return the main menu.

### **13. Delete File (At Stop Submenu)**

Files and FM stations can be deleted at corresponding modes as Music Mode, Voice Mode and FM Mode.

1. At Stop Interface.
2. Press **Mode** to enter Stop Submenu.
3. Press **Next/Pre** to select "Delete" or "Delete All".
4. Press **Mode** to enter Delete Interface.
5. Push **Next /Pre** to switch between "NO" and "YES".
6. Press **Mode** to confirm and deletion starts.

"Delete all" means to delete all the relevant files at current mode in current folder.

**14 .play submenu (when playing music and recorded files, you can enter into submenu as bellows:**

● **repeat Mode (Play Submenu)**

When playing music and recorded files, you can choose repeat mode by Random or Intro in here.

● **Equalizer (Play Submenu)**

There are Natural, Rock, Pop, Classic , Soft ,Jazz ,DBB for your choose.

● **Tempo Rate (Play Submenu)**

When playing music or recorded files, different tempo rate can be set (-8 to 8) without changing the tone and sound.

1. When playing music files
2. Press **Mode** to enter Play Submenu
3. Push **Next** to select Tempo Rate
4. Press **Mode** to enter Tempo Rate
5. Push **Next** to quicken tempo rate and push **Pre** to slow down tempo rate.
6. Press Mode button to confirm desired tempo rate to exit the current interface.

**Note:** Tempo Rate set is suitable to each music file till it is changed.

**Replay Mode(Play Submenu)**


**A-B Replay**

1. At Music Mode or Voice Mode

2. Press **Mode** to enter Play Submenu.


3. Press **Next** to select "Replay".

4. Press **Mode** to enter Replay.

"A" flickers in Replay Mode icon  and start point is to be set.

5. Press **Next** to set "A".

After "A" set, "B" flickers in icon , and endpoint B needs to be set.

6. Push **Next** to set "B". Replay icon  is fixed and A-B segment replay begins. When replay times count up to times set in advance, the player will quit from Replay Mode. At Replay Mode, pushing **Pre** can set "A" again to select another segment. (Setting of replay times refers to "Replay Times" in the next section.

**Replay Times (Play Submenu)**

You can choose replay times from (1 to 10) in here,

Replay times mean that after A-B segment has been replayed up to fixed times; it will exit from Replay Mode.

**Replay Gap (Play Submenu)**

You can choose replay gap from (1 to 10) in here,

Replay gap means the break period between different playing times (unit: second).

**15. How to install the CD driver.**

15.1. Please insert the CD to the CD-ROM, open the CD, double-click "**setup.exe**", and then proceed according to the instructions.

15.2. After the driver is set up successfully, by clicking the **Start→Program→MP3 Player Utilities 3.57**, you can see five tools: AMV Convert Tool, AMV Player, MP3 Player Disk Tool, MP3 Player Update Tool & Sound Convert Tool. Among of them, MP3 Player Disk Tool is for setting encrypted drive, MP3 Player Update Tool is for updating the firmware/bios, and Sound Convert Tool is for converting the format of Audio file.

15.3. Using as USB flash drive

As USB flash drive, it is USB2.0 interface. Compatible with Win98, Win98se, Win2000, Win Me & Win XP, and Mac OS 10.3 & above, and Linux Redhat 8.0 & above. For Win98/Win98se, setting up the driver is required.

After this device is connected to computer, shortly pressing **Menu** to switch it to MP3 player mode.

This device can recognize a maximum of 99 first grade folders set up by the user in the USB flash drive.

## **16. MP3 Player Disk Tool**

After installing the utility from the CD, you can run MP3 Player Disk Tool to format the player and for the encryption function

16.1 Format: You can format the player either by this program or by Windows.

16.2. Partition and Encrypt

You can divide USB disk into two parts by this tool, one is encrypted and the other is non-encrypted

Note: Windows 2K should be installed SP4 to support this function

### **Steps:**

16.2.1. Connect the player with PC

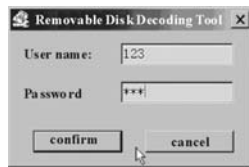
16.2.2. Run MP3 Player Disk Tool

16.2.3. Select "partition and encryption"

16.2.4. Select a suitable space for encrypted disk and setup user name and password

16.2.5. Click "start" and finish the partition

16.2.6. You will see two disks. Click encrypted disk "RdiskDecrypt" and input user name and password in the dialogue; if they are correct, you can open the disk and copy files in it.



16.2.7. Every time you connect the disk with your PC, you need input user name and password to open the encrypted disk.

⚠ Warning: Divide one disk into parts will remove all data, and so does combine process.

⚠ Warning: Please remember username and password. If you forget it, you can only making combine processing and you will loss all encrypted data.

#### 17. **AMV convert tool.**

The program can support \*.ASF,\*.WMV,\*.MPG,\*.RM,\*.MOV,\*.VOB formats, but you must convert them into AMV format by using AMV convert Tool.

Following is its instruction:

17.1, open AMV convert Tool.

17.2, Select the files you need to convert.



17.3, Select a folder to save converted files.



17.4. Click  to start converting.



## 18. Trouble Shooting

No Power	Check whether the battery have been inserted properly. Check whether the player is turned ON.
No sound is heard from headphone.	Check whether Volume is set "0" and connect the headphone plugs firmly. Check whether the headphone plug is dirty. Corrupted MP3 may make a static noise and the sound may cut off. Make sure that the music files are not corrupted.
Characters in LCM are corrupted	Check whether the right language has been selected.
FM Reception is poor.	Adjust the position of the headphone and player. Turn off the power of other electric devices near the player. The headphone may be used as the antenna.
Download of music files fails.	Check whether USB cable is damaged and is connected properly. Check whether driver is installed correctly. Check whether the player's memory is full.

